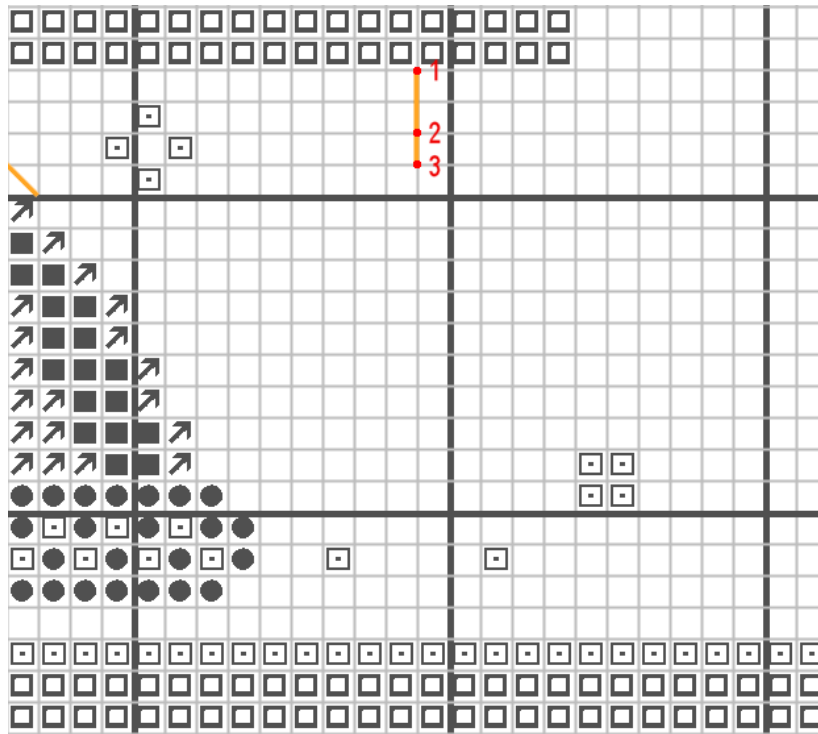


Attaching the Snowflake Charm

You can stitch the snowflake and place the charm on top or just attach the charm!



- Take one strands of 742
- Fold the thread in half and thread the needle with the loose ends of the threads.
- You now have a loop at the bottom and 2 threads through the needle.
- Insert your needle from back to the front at number 1 and down at 2 sticking the needle through the loop at the back.
- Come up at 3 and attach the charm using the ring at the top.
- Come down at 2.
- Tie off your thread at the back.

